



IMPORTANT: PRODUCT ADVISORY

Dear Valued Consumer:

Summit Medical Compassion Center ("Summit") strives to offer the highest quality medical marijuana ("cannabis") products for patients. The Rhode Island Office of Cannabis Regulation is requiring Summit to recall Promo Fruit Chews and Guava Lozenges due to the significant presence of delta-8 THC ("delta-8").

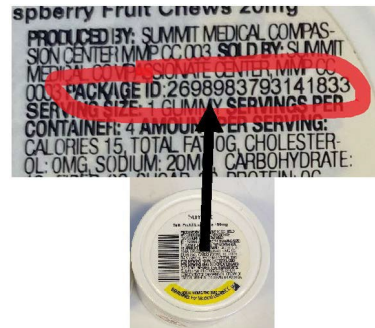
The term THC most often refers to delta-9 THC ("delta-9"), which is the most prominently occurring THC isomer in cannabis. However, THC has several other isomers that occur in the cannabis plant, including THCa and delta-8. Delta-9 is the more commonly known cannabinoid that causes psychoactive effects. Delta-8 is less psychoactive than delta-9 (estimated to be about 50-75% less). For more information, see this [CDC Health Advisory](#).

The products you purchased at Summit are regulated by the Rhode Island Medical Marijuana Program Rules and Regulations and are required to meet labeling requirements that include indicating Total THC.

The specific affected products include the following:

- Promo Fruit Chews 40mg THC (4pk 10mg each)
Package ID#: 4616562037395290
Distributed: 12/14//2021 through 2/28/2022
- Promo Fruit Chews 20mg THC (4pk 5mg each)
Package ID: 5581205789379156
Distributed: 12/20/2021 through 1/23/2022
- Guava Lozenges 40mg THC (4pk 10mg each)
Package ID: 7895625412629207
Sold: 11/21/2021 through 1/07/2022

The Package ID can be found on the product package as shown here.



If you have any of the Promo Fruit Chews with the impacted Package ID numbers, please discontinue use and destroy. If you have any of the Guava Lozenges with the impacted Package ID numbers, please discontinue use and return the product to the dispensary for a store credit or refund. If you have any concerns about consuming delta-8, contact your healthcare provider.

If you have any questions about this notice, please reach out to the Compassion Center at 401-889-3990, ext. 103 or info@smccri.org.

We appreciate the trust you place in Summit and we apologize for any inconvenience you may have experienced.

Sincerely,
Summit Medical Compassion Center